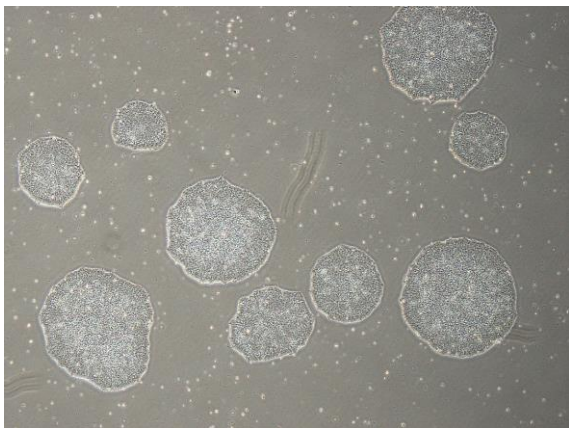
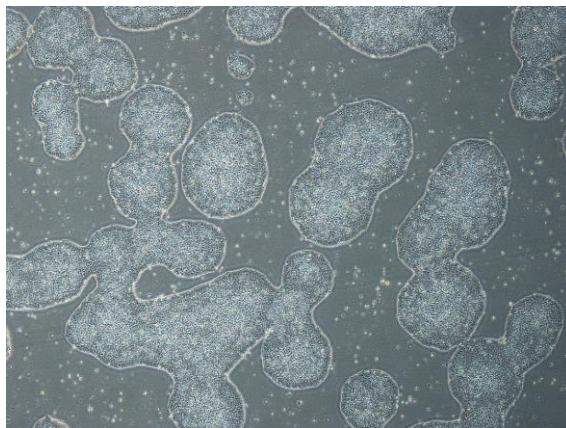


【 CiRA-j-1322 】 Morphology of iPSC colonies

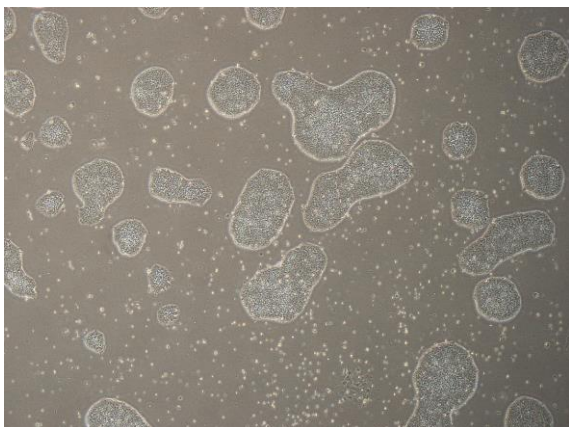
CiRA-j-1322-A: passage-3



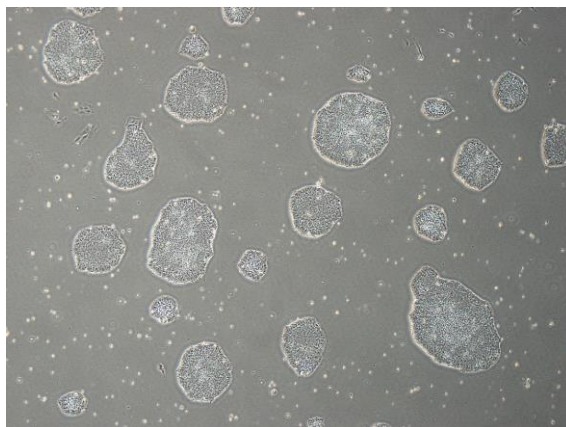
CiRA-j-1322-B: passage-3



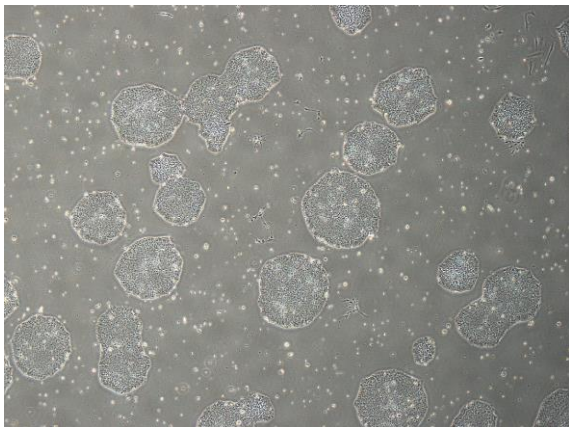
CiRA-j-1322-C: passage-3



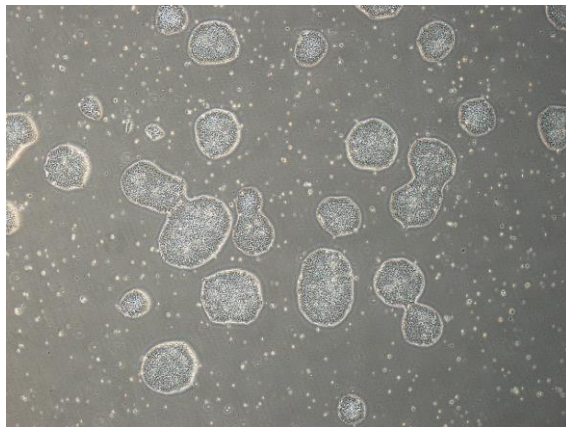
CiRA-j-1322-D: passage-3



CiRA-j-1322-E: passage-3



CiRA-j-1322-F: passage-3



(All images were captured at 4x magnification)